

U.S. University Fair Guide

2013



Al Jamiat

To receive more information about these universities listed,
please register at: www.al-jamiat.com/register

Spring 2013 U.S. University Fair Attendees

American College of Dubai	4
American Consortium of Universities	5
Academy of Art University	6
Colorado State University and INTO CSU	7
DePaul University	8
Embry-Riddle Aeronautical University – Prescott, Arizona	9
Foothill and De Anza	10
Iowa State University of Science and Technology	11
Kent State University	12
Koç University – Istanbul, Turkey	13
Miami University – Ohio	14
Middle Tennessee State University (MTSU)	15
Minot State University	16
The Ohio State University	17
Oregon State University	18
Purdue University	19
Rochester Institute of Technology, Dubai Campus	20
Saginaw Valley State University (SVSU)	21
Savannah College of Art and Design	22
SCAD: The University for Creative Careers	

The State University of New York – Brockport	23
Stevens Institute of Technology	24
University at Buffalo, The State University of New York	25
University of Bridgeport	26
University of California Irvine	27
The University of Central Florida (UCF)	28
University of Michigan – Flint	29
University of South Florida and INTO USF	30
University of Toledo	31
Western Kentucky University	32



American College of Dubai (ACD)

The American College of Dubai (ACD) is registered in the UAE as a private education institution, whose programs are accredited by the UAE Ministry of Higher Education and Scientific Research. ACD offers a full four year Bachelor of Business Administration (BBA) as well as tailored transfer programs in various disciplines including Computers, Engineering, Business, the Sciences and Liberal Arts. ACD allows students to begin their studies in the UAE followed by degree completion at universities in the USA, Canada, UK, UAE and elsewhere. Other programs on offer at the College include an intensive Academic English Program as well as various Foundation Programs. All ACD's programs equip students with technical, social and academic competencies vital for academic and career success. ACD has transferred over 3,000 students since its inception in 1991.

Contact Information:

Email: info@acd.ae

Website: www.acd.ae

American Consortium of Universities Partners in International Education

Comprised of a select group of collaborating institutions, the American Consortium of Universities provides a convenient way for international students and sponsors to choose from a wide range of academic programs at four distinguished American universities (Indiana State University, The University of North Carolina at Greensboro, The West Chester University of Pennsylvania, Valparaiso University (Indiana). Prior to beginning their academic studies, academically qualified students may obtain conditional university admission and prepare for their university studies while taking intensive English at the INTERLINK center on each campus.

Strong Majors and Programs

- Business, Management, and Economics
- Health, Nutrition and Sports Sciences
- Environment and Life Sciences
- Science, Engineering, Computer Science and Technology
- Human Resource Development
- Art, Music and Interior Design
- Law (LL.M and J.D)
- Geology, Geography and Aerospace Technology

Contact Information:

American Consortium of Universities

1600 Jackson Street, Suite 340

Golden, Colorado 80401 U.S.A.

Phone: (303) 278-8337

Email: ACU@interlink.edu

Website: www.AmericanUniversities.org

Academy of Art University

Academy of Art University was established in San Francisco in 1929, and today has more than 18,000 students, making it the largest private art and design university in the United States. With a faculty of top working professionals, students build their portfolio in the state-of-the-art facilities with access to the latest technology.

Academy of Art University offers accredited AA, BA, BFA, MA, MFA and M.Arch degree programs in 21 areas of study, as well as continuing art education, pre-college programs and teacher grants. Students can also enroll in flexible online degree programs in most areas of study. Academy of Art University is an accredited member of WASC, NASAD, CIDA (BFA-IAD, MFA-IAD) and NAAB (M.Arch).

Contact Information:

International Admissions

Academy of Art University

79 New Montgomery Street

San Francisco, California 94105 U.S.A.

Phone: (415) 274-2208

Fax: (415) 618-6278

Email: [intl admissions@academyart.edu](mailto:intladmissions@academyart.edu)

Website: www.academyart.edu

Colorado State University and INTO CSU

Colorado State University (CSU) founded in 1870 is located in the friendly college town of Fort Collins at the base of the Rocky Mountain foothills, just a one hour drive from Denver. With a population of about 140,000, Fort Collins is known for its low crime rate, clean air and water, abundant recreational opportunities, reasonable cost of living, and more than 300 days of sunshine per year. The town has also been acknowledged by *Money* magazine as one of America's "Best Places to Live." CSU was founded in 1870. Today, CSU has more than 26,500 students and is a Carnegie Tier I Research Institution with annual research expenditures topping \$350 million.

INTO CSU offers General English and Academic English as well as innovative undergraduate and graduate pathways programs. During a pathway program, students take university credits towards their degree while improving their English. Successful completion of a pathway guarantees progression to the university with earned credits towards a degree. Currently, over 400 students are studying at INTO CSU in English and pathway programs leading to a bachelor's or master's degree.

Contact Information:

1037 Campus Delivery
Fort Collins, Colorado 80523 U.S.A.
Phone: (970) 492-4686
Email: INTO@colostate.edu
Website: www.intohigher.com/csu

CSU International Graduate & Undergraduate Admissions

CSU International Undergraduate Admission
Office of Admissions
Colorado State University
1062 Campus Delivery
Fort Collins, Colorado 80523-1062 U.S.A.
Phone: (970) 491-6909
Email: admissions@colostate.edu
Website: admissions.colostate.edu/internationalstudentshome

DePaul University

DePaul University, located in Chicago, is home to nearly 1,400 international students from over 100 countries. We offer over 260 bachelors and masters degree programs, and 6 Doctoral programs. The university is fully accredited by the Higher Learning Commission of the North Central Association of Colleges and Schools and also holds other programmatic and specialized accreditation. Taking advantage of our urban campuses gives our students access to social, cultural, and business opportunities right outside their door. We are a diverse community with a superior mix of cultures, histories, and ways of thinking.

Contact Information:

English Language Academy
25 E. Jackson Blvd., Suite 1700
Chicago, Illinois 60604 U.S.A.
Phone: (312) 362-6455
Fax: (312) 362-8301
Email: ela@depaul.edu
Website: ela.depaul.edu

Embry-Riddle Aeronautical University – Prescott, Arizona

Embry-Riddle Aeronautical University is the world's oldest and largest fully accredited university specializing in aviation and aerospace. The university offers degrees at residential campuses in Prescott, Arizona, and Daytona Beach, Florida.

Embry-Riddle in Prescott has 1,700 students and is located in a beautiful, rural, mile-high city approximately 100 miles northwest of Phoenix and 375 miles east of Los Angeles. The climate for study, flight, and outdoor activities in Prescott is perfect most of the year, with moderate temperatures, four distinct seasons, and opportunities to see some of the great natural wonders of the world (the Grand Canyon, Bryce Canyon National Park, and the Petrified Forest) less than a day's drive away. The Daytona Beach campus has 4,800 students on a 178-acre campus just 15 minutes from the beach and 60 miles north of Kennedy Space Center. Most space vehicle launches are visible from campus. The campus sits on the edge of Daytona Beach International Airport.

Embry-Riddle follows the semester system with fall classes beginning in late August and spring semester ending at the beginning of May. Bachelor's degrees are offered at the Prescott campus in aerospace engineering, computer engineering, electrical engineering, mechanical engineering, interdisciplinary studies, global security and intelligence studies, safety science (including an MS degree in this field), space physics, aeronautical science, aeronautics, applied meteorology, software engineering, and aviation business administration.

Contact Information:

Andy Fraher

Director, International Recruitment

Embry-Riddle Aeronautical University – Prescott, Arizona

3700 Willow Creek Road

Prescott, Arizona 86301 U.S.A.

Phone: 001.928.777.6600

Email: printadm@erau.edu

Website: <http://prescott.erau.edu>

Foothill and De Anza Colleges

Foothill and De Anza offer the first two years of a university Bachelor's degree on two campuses located in the heart of Silicon Valley just south of San Francisco. We are one system with two locations that are five minutes apart. De Anza has a total enrollment of 25,000, and Foothill has 19,000 students. Together, we enroll 2,500 international students from almost 100 countries. Both of our colleges rank among the top community colleges in the U.S., and we are charter members of the prestigious League for Innovation in Community Colleges. Students study with us for two years in over 100 majors, and then transfer into their third year at the university to complete their Bachelor's degree.

Contact Information:

George Beers

Dean of International Programs, Foothill

12345 El Monte Road

Los Altos Hills, California 94022 U.S.A.

Phone: (650) 949-7077

Email: BeersGeorge@fhda.edu

Detailed information and applications at: www.international.fhda.edu

Iowa State University of Science and Technology

Iowa State University of Science and Technology, established in 1858, is a comprehensive Carnegie Foundation Research I University offering Bachelor's, Master's and Doctorate degrees. The birthplace of the first computer, the nation's first land-grant institution and first college of veterinary medicine, Iowa State ranks 3rd in new patentable biotechnology, 3rd for engineering specialty programs and in the top 15 for architecture and interior design. More than 28,000 students choose from 100 majors, study with world-class scholars and hone their leadership skills in more than 800 student organizations. ISU's student body of 28,000 includes over 3,000 international students from more than 110 countries. Iowa State's picturesque 800-hectare campus features a park-like setting and was highlighted in the publication *The Campus as a Work of Art* as one of the most beautiful in the U.S.

Contact Information:

Ms. Ann Gogerty

Global Recruitment Coordinator

Email: agogerty@iastate.edu

Website: www.iastate.edu

Kent State University

Kent State University is one of the top universities in the United States with students from all over the world. When you add more than 2,000 faculty to that community, it means that you will have the opportunity to learn with and from a richly diverse group of people. Located in the Great Lakes region of the U.S., (near Cleveland and Akron), Kent State has more than 2,000 international students from approximately 100 countries around the world. In addition, internships, special programming, student organizations and the friendships you make on campus will help you create a community in which you will thrive.

Top universities in the world.

-Times Higher Education of London

Top ranking among America's best colleges.

-U.S. News and World Report

Contact Information:

Salma Benhaida

International Admissions Counselor

Office of Global Education

Kent State University

106 Van Campen Hall

625 Loop Road

Kent, Ohio 44242-0001 U.S.A.

Phone: (330) 672-0970

Email: sbenhaid@kent.edu

Website: www.kent.edu/admissions/international

Koç University – Istanbul, Turkey

Koç University, founded in 1993, offers a world class educational experience in Istanbul, Turkey – the meeting point of East and West. At Koç, the approach to education combines diverse global perspectives with the multi-dimensional dynamics of Turkey and its regional culture.

Recognized by the Council of Higher Education, Koç University is internationally accredited by EQUIS and highly ranked by The Times Higher Education, Financial Times, Eduniversal and Frankfurter Allgemeine. Member of Chartered Financial Analyst (CFA), CEMS and partner with more than 220 universities around the globe.

Koç University offers programs at Graduate level (Graduate School of Business; Engineering and Science; Health Sciences; Social Sciences and Humanities) and Undergraduate level (College of Administrative Sciences and Economics; Social Sciences and Humanities; Sciences; Engineering; Law; Medicine and Nursing).

A highly competitive scholarship program is in place for graduate students.

Contact Information:

Meline Koruk
Koç University
Office of International Programs
Student Center, Floor -3, Room B387
Rumeli Feneri Yolu, Sarıyer 34450
Istanbul, Turkey
Phone: +90 212 338 1678
Email: study@ku.edu.tr
Website: www.ku.edu.tr
<http://oip.edu.tr>

Miami University – Ohio

Founded in 1809, and nationally recognized as one of the most outstanding undergraduate institutions, Miami University is a public university located in Oxford, Ohio. With a student body of 16,000, Miami effectively combines a wide range of strong academic programs with the personal attention ordinarily found only at much smaller institutions.

Our focus on personal attention is enhanced through study in selected disciplines by graduate students, who along with undergraduates, participate with faculty in significant research and scholarship activities. Miami also offers vibrant residential and community-based programs involving students in life-enhancing activities that build leadership and develop citizenship, character, and lifelong friendships.

In 2013, *U.S. News & World Report* ranks Miami first among public universities for "Best Undergraduate Teaching, and in the top three overall, just after Dartmouth and Princeton. The Farmer School of Business is a nationally recognized business school which offers eight majors. The School of Engineering & Applied Science offers 13 majors including Chemical, Computer, Electrical, Bio, Mechanical, and Software Engineering.

Miami offers over 100 undergraduate majors and more than 50 graduate programs in different fields of study.

Contact Information:

Office of Admission (Bachelor or Undergraduate):

Ms. Ann Rahmat

Assistant Director for International Recruitment

Miami University - Office of Admission

301 South Campus Avenue, Oxford, Ohio 45056 U.S.A.

Email: internationaladmission@MiamiOH.edu

Phone: (513) 529-2288

Fax: (513) 529-0682

Website: MiamiOH.edu/apply

Contact the Office of Graduate Studies (Master and Doctoral):

Ms. Nazanin Tork

Director for International Admission

Miami University - Graduate School

102 Roudebush Hall, Oxford, Ohio 45056 U.S.A.

Phone: (513) 529-3734

Email: intlapp@MiamiOH.edu

Website: MiamiOH.edu/graduate-studies

Middle Tennessee State University (MTSU)

Middle Tennessee State University (MTSU) located in Murfreesboro, just south of Nashville, Tennessee and home to approximately 26,000 students that represents almost all U.S. states and at least 74 countries. MTSU offers a comprehensive academic program where you can choose from over 140 undergraduates and close to more than 50 graduate programs.

Exceptional faculty, high-quality academic programs, an emphasis on teaching excellence, an commitment to student support services have earned MTSU a high ranking in various publication such as *Forbes* magazine, which has placed MTSU 57th among the 100 Best Colleges and universities in America.

A safe and friendly environment, a diverse student body, and numerous extracurricular activities make MTSU the number one choice of undergraduate in Tennessee, and international students proudly choose us as home far away from home! Merit-based scholarships are available for new incoming international students.

Contact Information:

Office of International Admission
 Aryo Hasnugung
 Coordinator of International Recruitment
 1500 Greenland Drive
 Peck Hall 208
 Murfreesboro, Tennessee 37132 U.S.A.
 Email: Aryo.hasnugung@mtsu.edu
 Website: www.mtsu.edu

Minot State University

Minot State University is a regional, public institution home to 3,800 students from the United States and more than 375 International students from 30 different countries. We are located in Minot, North Dakota, home to one of the lowest crime rates, best economy in the United States as well as one of the lowest unemployment rates in the United States. Our international students find a campus large enough to have a big town university feel, yet they find faculty who know them by name and who are very engaged. Our programs are nationally ranked and accredited offering bachelors and masters' degrees. We offer over 60 bachelor's degrees and 10 master's degrees. Minot State University is one of the few higher learning institutions where all students pay an affordable flat tuition rate. We offer in-state tuition for all students including international. We care that international students receive a quality education at a significant value and we know our students will receive personalized support from our international student services offices.

Undergraduate Tuition/Fees per year

Annual tuition & fees* \$5,922

Annual room & board* \$4,710

Total \$10,632

Graduate Students Tuition/Fees per year

Annual tuition & fees* \$7,439

Annual room & board* \$4,710

Total \$12,149

Contact Information:

Janan Thom

Minot State University

International Student Recruiter

Phone: (701) 858-3183

Email: janan.thom@minotstateu.edu

Website: www.askmsu.com/international

The Ohio State University

The Ohio State University is America's second largest and the most comprehensive public research university. *U.S. News & World Report* ranks Ohio State among the top 20 public universities in the United States and top 10 research schools. We are located in Columbus, which is the capital of Ohio and the 16th largest city in the U.S. with several Fortune 500 companies as their headquarters such as Limited Brands, Nationwide Insurance and others.

The university offers 175 undergraduate majors, 475 academic specializations, 122 master's program, 94 doctoral degree programs, more than 1,000 student organizations, and many co-ops/internships in every academic area. Each year, more than 5,500 international students attend Ohio State and benefit from the challenges, complexity, and opportunities found only at a world-class research university. With more than 465,000 living alumni around the world, Ohio State has attained international distinction for academics and research.

Contact Information:

Enrollment Services
Student Academic Services Building
281 West Lane Avenue
Columbus, Ohio 43210
Phone: (614) 292-3980
Fax: (614) 292-4818
Email: askabuckeye@osu.edu
Web: www.osu.edu

Stay Connected to Ohio State:

Join: facebook.com/osu
Follow: twitter.com/futurebuckeyes
Create: <http://viewbook.osu.edu/>
Read: undergrad.osu.edu/buckeyesblog
View: <http://undergrad.osu.edu/international/index.html>

Oregon State University

Oregon State University is a leading research university located in one of the safest, smartest, greenest small cities in the nation. Founded in 1868, Oregon State welcomes a diverse student body of over 26,000 students from all over the world. Our nationally and globally ranked programs in Engineering, Pharmacy, Forestry, Chemistry, Public Health, Veterinary Medicine and Business attract high-achieving students and offer state-of-the art facilities. Oregon State University is a leading research university, recognized as a Tier 1 institution by the Carnegie Foundation, with \$261.7 million in research funding.

Oregon State University offers academic Pathway and English language training programs through the INTO OSU Center. Personalized support tailored to international students' educational, social and cultural needs prepares them to progress with confidence as degree-seeking students. INTO OSU provides international students with learning experiences and services that promote academic, professional and personal success.

Merit-based scholarships are offered to students with outstanding academic qualifications. Some are highly competitive and require an application, while others are merit-based and automatically awarded based on your academic achievements. Come visit our booth or contact our admissions department to learn more about scholarships!

Contact Information:

Phone: (541) 737-5719

Fax: (541) 737-4220

Email: intladmit@oregonstate.edu

Website: www.oregonstate.edu/admissions/international
www.intohigher.com/oregonstate

Purdue University

Purdue provides a global learning experience in a peaceful and supportive community. Purdue ranks 2nd among U.S. public institutions with an international student enrollment of nearly 8,000 students from 127 countries. Purdue is an international leader in engineering, management, science, and agriculture. It has an excellent reputation in health and human sciences, education, liberal arts, nursing, pharmacy, technology, and veterinary medicine, with many of these programs ranked nationally. Purdue prepares its graduates for success. A Wall Street Journal survey of corporate recruiters ranks Purdue fourth in preparing students for the work force. An extensive orientation program, Boiler Gold Rush International, assists undergraduate students with the transition to academic life in the U.S. while providing opportunities to build friendships with other Purdue students. Monthly trips to famous cultural and historic sites, volunteer opportunities and the International Friendship Program enable international students to connect with the community outside of the university and enhance their knowledge about American culture.

Contact Information:

Purdue University International Undergraduate Admissions

Office of International Students and Scholars

Schleman Hall, Room 136

475 Stadium Mall Drive

West Lafayette, Indiana 47907

Phone: (765) 494-0380

Fax: (765) 496-6340

Email: intl-admissions@purdue.edu

Website: www.iss.purdue.edu

Purdue University Graduate School

Young Hall, Room 170

155 South Grant Street

West Lafayette, Indiana 47907

Phone: (765) 494-2600

Email: gradinfo@purdue.edu

Website: www.purdue.edu/grad

How to Apply: www.gradschool.purdue.edu/admissions

Rochester Institute of Technology, Dubai Campus

RIT, a comprehensive university founded in 1829, has had a long history of offering degree programs that meet business and industry needs, and prepares students for successful careers in a global society. RIT launched a campus in Dubai in 2008 in Dubai Silicon Oasis, the hub for Microelectronics Engineering. RIT Dubai offers the same high quality, competitive, technology-based educational bachelors and masters degree programs in Engineering, Computing and Business. All programs in our Dubai campus are accredited in UAE and Internationally recognized. Students studying in Dubai will earn the same degree from New York, U.S.A. Students studying in the Dubai campus will have the opportunity to transfer to the main campus in NY or pursue a study abroad for 1-2 semesters in NY during their academic program at RIT Dubai. RIT Dubai offers excellent scholarships to those that qualify.

Applications are open now for the Dubai campus online:
www.rit.edu/dubai

Contact Information:

Undergraduate & Graduate Applications

Hanan Khamis

Director of Admissions

Tel: +971 4 371 2000

Fax: +971 4 320 8819

Email: dubai@rit.edu

Website: www.rit.edu/dubai

Saginaw Valley State University (SVSU)

Saginaw Valley State University (SVSU) is a public, state university in a peaceful, beautiful location in the United States within the State of Michigan. SVSU has approximately 10, 800 students including over 600 international students from over 30 countries. Over 80 programs of study at the undergraduate and graduate levels are offered. SVSU has an English Language Program (ELP) on campus. The ELP accommodates all language levels, including beginners. SVSU provides both full and conditional admissions for all undergraduate and majority of graduate programs. SVSU has some of the most prestigious and world recognized accreditations. SVSU's College of Business and Management is AACSB accredited. SVSU's College of Science, Engineering and Technology undergraduate program are all accredited by the appropriate national accrediting bodies including ACS (American Chemical Society) and the Engineering Accreditation Commission of ABET. The University offers small class size (average 24 students per undergraduate classroom and 12 students per graduate classroom). Majority of SVSU's instructors are professors or have a PhD/terminal degree. Professors teach their courses directly, not through teaching assistants. Office of International Programs (OIP) offers processing of applications in a timely matter. The OIP also has three full-time international student advisers who speak Arabic, German, Chinese and English fluently. On-campus housing has been voted the best in Michigan and even provides full kitchens, all within walking distance from classrooms. Tuition is the most competitive in Michigan at an estimated \$14,496 for the 2013-2014 academic year (24 credits) for an undergraduate program, and \$16,574 (18 credits) for a graduate program. International scholarships are available. Graduate In-State Tuition Scholarships are available to students who complete an undergraduate program through SVSU.

Contact Information:

Stacy StremLOW
 International Student Recruiter
 International Programs
 Saginaw Valley State University
 7400 Bay Road
 University Center, Michigan 48710 U.S.A.
 Phone: (989) 964-4473
 Direct: (989) 964-4268
 Fax: (989) 964.6066
 Email: stacy.stremLOW@svsu.edu
 Website: www.svsu.edu/oip

Savannah College of Art and Design

SCAD: The University for Creative Careers

The Savannah College of Art and Design is a private, nonprofit, accredited institution conferring bachelor's and master's degrees to prepare talented students for professional careers. As the most comprehensive art and design university in the world, SCAD offers over 40 areas of study and nearly 60 specializations at distinctive locations in Savannah and Atlanta, Georgia; in Hong Kong; in Lacoste, France; and online through SCAD eLearning.

In the last three years, SCAD has garnered acclaim from respected organizations and publications including:

- Undergraduate and graduate interior design programs ranked No. 1 in the United States by *DesignIntelligence* in "America's Best Architecture & Design Schools"
- One of "America's Best Colleges for Entrepreneurs," by *Fortune Small Business*
- Ranked number one by readers of *Huffington Post* in a poll of the top fashion colleges and universities in the U.S.
- Undergraduate and graduate industrial design programs ranked third and fourth in the nation, respectively, by *DesignIntelligence*
- Design management program named one of the "World's Best Design Schools" by *Businessweek*
- One of *The Princeton Review's* "Top Schools for Video Game Design Study" in United States and Canada
- One of the "top 10 game development programs favored by industry recruiters," *Los Angeles Times*
- Among CFI's "Global Ivy League" and one of the world's top 20 animation schools, *3D* magazine

Contact Information:

Omar Elnahas
 International Admission Representative
 Savannah College of Art and Design
 P.O. Box 77300
 Atlanta, Georgia 30357-1300 U.S.A.
 Phone: (404) 253-2700
 Fax: (404) 253-3466
 Email: oelnahas@scad.edu
 Website: www.scad.edu

The State University of New York – Brockport

The State University of New York, Brockport is located in the Village of Brockport, an historic community in Western New York State. Brockport offers 49 undergraduate majors and 47 graduate programs. We are rated among the “Best in the Northeast” by *The Princeton Review* and ranked 57th regionally among masters universities by the *U.S. News & World Report* “America’s Best Colleges” guide.

A leading public institution, Brockport is a comprehensive university with a robust academic portfolio and excellent co-curricular opportunities. Rigorous programs in the arts, humanities, and sciences are complemented with a rich array of professional programs and innovative graduate degrees.

Programs of Distinction Include:

Business Kinesiology Mathematics and Sciences Physical Education
Sport Studies

Contact Information:

Aleta Anthony

Associate Director of International Recruitment

State University of New York

The College At Brockport

350 New Campus Drive Brockport, New York 14420 U.S.A.

Phone: (585) 395-2119

Fax: (585) 637-3218

Email: applyint@brockport.edu

Website: www.brockport.edu

Stevens Institute of Technology

Founded in 1870, and located minutes from New York City, Stevens Institute of Technology, as the first College of Mechanical Engineering in the United States, is one of the leading technological universities in the world dedicated to learning and research. Through its broad-based curricula, nurturing of creative innovation, and cross-disciplinary research, Stevens provides students an inclusive educational experience in the sciences, engineering, business and the humanities. Stevens continues to educate successful, innovative and diverse students who become industry leaders, developing and advancing new technologies and creating solutions for the betterment of society.

With more than 2,300 undergraduate and 3,600 graduate students, the University is dedicated to harnessing the power of applied research and innovation to empower the best minds to solve the world's most complex problems.

Contact Information:

Contact for Undergraduate Information

Ilona Castro

Director of International Admission

One Castle Point on Hudson

Hoboken, New Jersey 07030 U.S.A.

Phone: (201) 216-8349

Fax: (201) 216-8348

Email: ilona.castro@stevens.edu

Website: www.stevens.edu

Contact for Graduate Admissions

Somil Mehta, M.B.A.

Assistant Director of Graduate Admissions

One Castle Point on Hudson

Hoboken, New Jersey 07030 U.S.A.

Phone: (201) 216-8130

Fax: (201) 216-8044

Email: somil.mehta@stevens.edu

Website: www.stevens.edu

University at Buffalo, The State University of New York

The University at Buffalo is the largest campus in the State University of New York system and New York's leading public center for graduate and professional education. Our more than 28,000 students pursue their academic interests through more than 300 undergraduate, graduate and professional degree programs. Founded in 1846, UB is a member of the Association of American Universities: an association of 61 leading research universities in the United States and Canada.

UB's College of Arts and Sciences offers study in the arts, humanities, social sciences and physical sciences. The university also offers degree programs in its schools of architecture and planning, dental medicine, education, engineering, public health and health professions, law, management, medicine and biomedical sciences, nursing, pharmacy and social work. A center of international education, UB enrolls more than 5,000 international students from more than 100 countries.

At UB, students will receive high quality education with an affordable tuition, making it one of the best values for your education. UB's leading faculty and innovative initiatives at many of our cutting-edge research centers make UB a leading public research university.

Contact Information:

Raymond Lew
International Enrollment Management
University at Buffalo
The State University of New York
411 Capen Hall
Buffalo, New York 14260-1604 U.S.A.
Phone: (716) 645-2368
Fax: (716) 645-2528
Email: intiem@buffalo.edu
Website: www.buffalo.edu/intiem

University of Bridgeport

Founded in 1927 and located one hour north of New York City, the University of Bridgeport is an international comprehensive university, with award-winning academic programs. At UB students can earn degrees in over 120 innovative undergraduate and graduate degree programs.

With 20 per cent of its student population from over 80 countries who are active in student government, publications and clubs, the University of Bridgeport prides itself in being a real world "experience in globalization." Through its International Programs, the University provides academic, co-curricular, and extracurricular activities that support the University's commitment to promote global citizenship and a commitment to public service.

Over 400 full and part-time faculty, including Fulbright Scholars, National Science Fellows, Ford Fellows, National Endowment for the Humanities Fellows, American Council for learned Societies Scholars, Phi Beta Kappa Scholars offer instruction in our career-oriented degree programs. Academic scholarships are available for both undergraduate and graduate students, and a variety of internship and assistantships are awarded to each semester qualified students.

Contact Information:

Steven Boyd
Director of International Admissions
University of Bridgeport
126 Park Avenue
Bridgeport, Connecticut 06604 U.S.A.
Phone: (203) 576-4932
Email: sboyd@bridgeport.edu
Website: www.bridgeport.edu

University of California Irvine

University of California, Irvine (UC Irvine) is ranked the #12 public university in the United States. Three Nobel Prizes have been awarded to UC Irvine faculty members. The city of Irvine, ranked for eight years in a row as the safest city in the U.S., is located within the heartland of The O.C. (Orange County), a dynamic and fast growing business environment close to the Pacific Ocean, and is an hour away from both Los Angeles and San Diego.

UC Irvine Extension's programs for international students:

- International Undergraduate Preparation Program
- International Graduate Studies Preparation Program
- English Language Programs
- Accelerated Certificate Programs

Contact Information:

Angelika Volkman

Associate Dean

University of California, Irvine

University Extension

International Programs

P.O. Box 6050

Irvine, CA 92616-6050 U.S.A.

Phone: (979) 824-5991

Fax: (979) 824-8065

Email: uciesl@uci.edu

Website: www.extension.uci.edu/international

The University of Central Florida (UCF)

The University of Central Florida (UCF) is one of the most dynamic universities in the USA. Offering 211 degree programs, it has become an academic and research leader in numerous fields, such as optics, modeling and simulation, engineering and computer science, business administration, education, and hospitality management. UCF is a modern university committed to academic excellence. As the nation's second-largest university, UCF has the resources and faculty to provide a quality education.

UCF is one of the fastest growing research universities in the country in one of the most vibrant cities in the world. Located in beautiful Orlando, Florida, UCF supports innovation in the central Florida region by engaging in research, promoting creative activities and providing cultural diversity through its student body and faculty.

UCF partners with top level companies, including Walt Disney World, Universal Studios, Kennedy Space Center, Lockheed Martin and Siemens to provide opportunities for students to gain practical experience. Come see why students from more than 140 countries call UCF home. Visit us at www.imagine.ucf.edu.

Contact Information:

Chris LeGoullon
Recruiting Coordinator
International Services Center
P.O. Box 160130
Orlando, Florida 32816-0130 U.S.A.
Phone: (407) 823-0801
Fax: (407) 823-2526
Email: chris.legoullon@ucf.edu
Website: www.ucf.edu

University of Michigan – Flint

The University of Michigan-Flint is one of three campuses of the world-renowned University of Michigan system. UM-Flint is located in the lively urban setting of downtown Flint, Michigan. For over 50 years, UM-Flint has been committed to the highest standards of teaching, scholarship, and creativity. Students may choose from over 120 undergraduate and 64 graduate programs in the liberal arts and in a number of pre-professional and professional fields.

Our English Language Program is designed to develop students' skills in reading, vocabulary, writing, grammar, listening, and speaking for academic purposes. Full time students receive 20 hours per week of English instruction combined with cultural immersion. Conditional admission to the University of Michigan-Flint is possible for qualified candidates.

Contact Information:

Frederik Schlingemann
International Recruiting Coordinator
University of Michigan-Flint
219 University Center
303 East Kearsley Street
Flint, Michigan 48502 U.S.A.
Phone: (810) 762-0867
Email: ic@umflint.edu
Website: www.umflint.edu/international

University of South Florida and INTO USF

The University of South Florida (USF), located in beautiful Tampa Florida in close proximity to NASA, Florida beaches, Disney World and Busch Gardens, enrolls over 47,000 students. Recently, *U.S. News & World Report* ranked USF 8th in the United States' top 20 "up and coming universities". USF offers over 250 undergraduate and graduate degrees in fields ranging from business to engineering to public health. Out of 4,200 colleges and universities in the United States, USF is one of only 96 universities and only 63 public universities in America in the Carnegie Foundation for the Advancement of Teaching Tier 1 research category, and is ranked 27th in the list of Top American Public Research Universities.

INTO USF, located in the heart of the USF Tampa Campus, offers General English and Academic English as well as innovative undergraduate and graduate pathways programs. During a pathway program, students take university credits towards their degree while improving their English. Successful completion of a pathway guarantees progression to the university with earned credits towards a degree. Currently, almost 400 students are studying English at INTO USF and over 300 students are in INTO USF pathways leading to a bachelor's or master's degree.

Contact Information:

INTO USF

Attn: Admissions
4202 East Fowler Avenue FAO100
Tampa, Florida 33620 U.S.A.
Phone: (813) 905-4686
Email: INTOAdmissions@usf.edu
Website: www.intohigher.com/usf

USF International Graduate Admissions

4202 East Fowler Avenue ADM226
Tampa, Florida 33620 U.S.A.
Phone: (813) 974-2846
Website: www.grad.usf.edu/graduate-admissions-international.asp

USF International Undergraduate Admissions

4202 East Fowler Avenue SVC1036
Tampa, Florida 33620 U.S.A.
Phone: (813) 974-3350
Website: usfweb2.usf.edu/Admissions/International

University of Toledo

The University of Toledo is one of 13 state universities in Ohio. It was established in 1872 and became a member of the state university system in 1967. The University of Toledo is the third-largest public university with a current student enrollment of 23,000 students. UT is a community built around eleven colleges including Engineering, Business, Law, Pharmacy, Natural Sciences / Mathematics and Medicine, matched by only a handful of public universities nationwide. UT's main campus, located along the banks of the Ottawa River in a residential section of the city, includes historic buildings, modern facilities, contemporary residence halls and abundant green space.

The University of Toledo Health Science Campus is home to the UT Medical Center hospitals and clinics and many of UT's health-science research and education programs that are teaching the next generation of physicians, nurses and other health care professionals. The University is home to over 1600 international students from more than 90 countries worldwide. UT provides a comprehensive and accredited English Language Program that offers training on the UT campus and allows students to stay in University housing while achieving English language proficiency. Scholarships for quality undergraduate students are available from the first semester of enrollment in undergraduate study.

Contact Information:

Mark Schroeder

Associate Director

Office of Undergraduate Admission

Toledo, Ohio 43606-3390 U.S.A.

Phone: (419) 530-1213

Fax: (419) 530-5745

Email: mark.schroeder5@utoledo.edu

Website: www.utoledo.edu

Western Kentucky University

Western Kentucky University is a Leading American University with International Reach. WKU prepares students to be productive, engaged, and socially responsible citizen leaders of a global society. It provides research, service and lifelong learning opportunities for its constituents. WKU is home to many highly ranked and nationally-recognized academic programs such as Journalism and Broadcasting, Education, Engineering, Business and our award winning speech and debate team. WKU offers conditional admission through ESLI and scholarships for degree programs. Our hilltop campus is a place of beauty and friendliness. It embraces a proud heritage and a bold, ambitious future.

Contact Information:

Raza Tiwana

Assistant Director of International Admissions

Western Kentucky University

1906 College Heights Blvd.

Bowling Green, Kentucky 42101

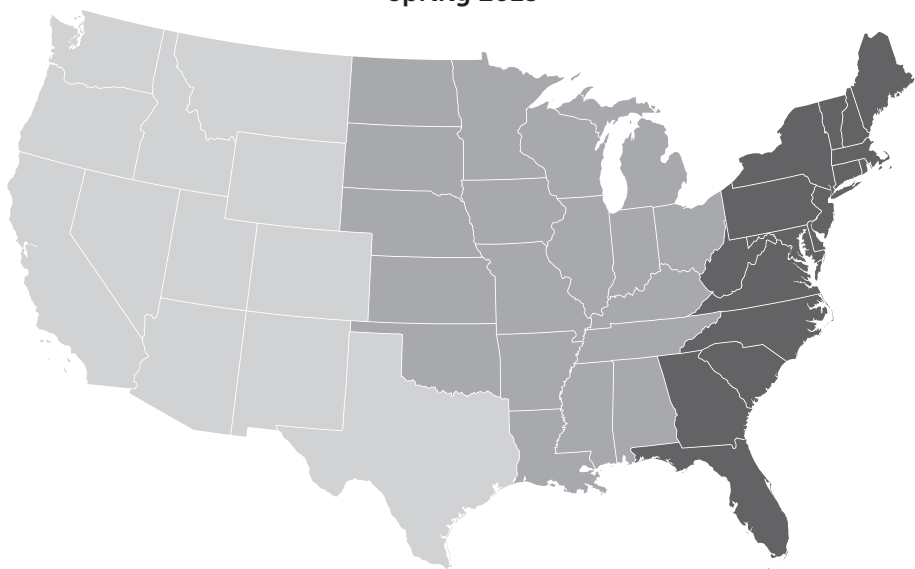
Phone: (270) 745-2551

Email: raza.tiwana@wku.edu

Website: www.wku.edu

Locations of Universities on U.S. Educational Group Tour

Spring 2013



Western United States

Academy of Art University
 Colorado State University
 and INTO CSU
 Embry-Riddle Aeronautical
 University – Prescott, AZ
 Foothill and De Anza
 Oregon State University
 University of California Irvine

American College of Dubai
 American Consortium
 of Universities
 Koç University –
 Istanbul, Turkey
 Rochester Institute of
 Technology, Dubai Campus

Central United States

DePaul University
 Iowa State University of
 Science and Technology
 Kent State University
 Miami University – Ohio
 Middle Tennessee
 State University
 Minot State University
 The Ohio State University
 Purdue University
 Saginaw Valley State
 University (SVSU)
 University of Michigan
 – Flint
 University of Toledo
 Western Kentucky
 University

Eastern United States

Savannah College of Art
 and Design
 The State University of
 New York – Brockport
 Stevens Institute of
 Technology
 University at Buffalo,
 The State University of
 New York
 University of Bridgeport
 The University of Central
 Florida
 University of South Florida
 and INTO USF

Visit www.al-jamiat.com for more information and to
 register for more university information.

Visit us on Facebook: www.facebook.com/aljamiat

Spring 2013 U.S. University Fair Attendees

American College of Dubai

American Consortium of Universities

Academy of Art University

Colorado State University
and INTO CSU

DePaul University

Embry-Riddle Aeronautical
University – Prescott, Arizona

Foothill and De Anza

Iowa State University of Science
and Technology

Kent State University

Koç University – Istanbul, Turkey

Miami University – Ohio

Middle Tennessee State University

Minot State University

The Ohio State University

Oregon State University

Purdue University

Rochester Institute of
Technology, Dubai Campus

Saginaw Valley State
University (SVSU)

Savannah College of Art
and Design

The State University of
New York – Brockport

Stevens Institute of
Technology

University at Buffalo,
The State University of
New York

University of Bridgeport

University of California Irvine

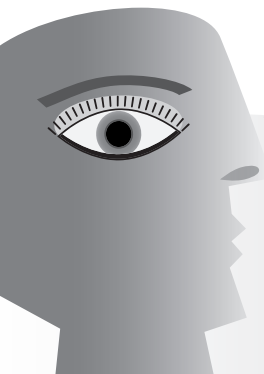
The University of Central Florida

University of Michigan – Flint

University of South Florida
and INTO USF

University of Toledo

Western Kentucky University



U.S. Educational Group
P.O. Box 382125
Cambridge, MA 02238-2125
Email: info@al-jamiat.com
www.al-jamiat.com